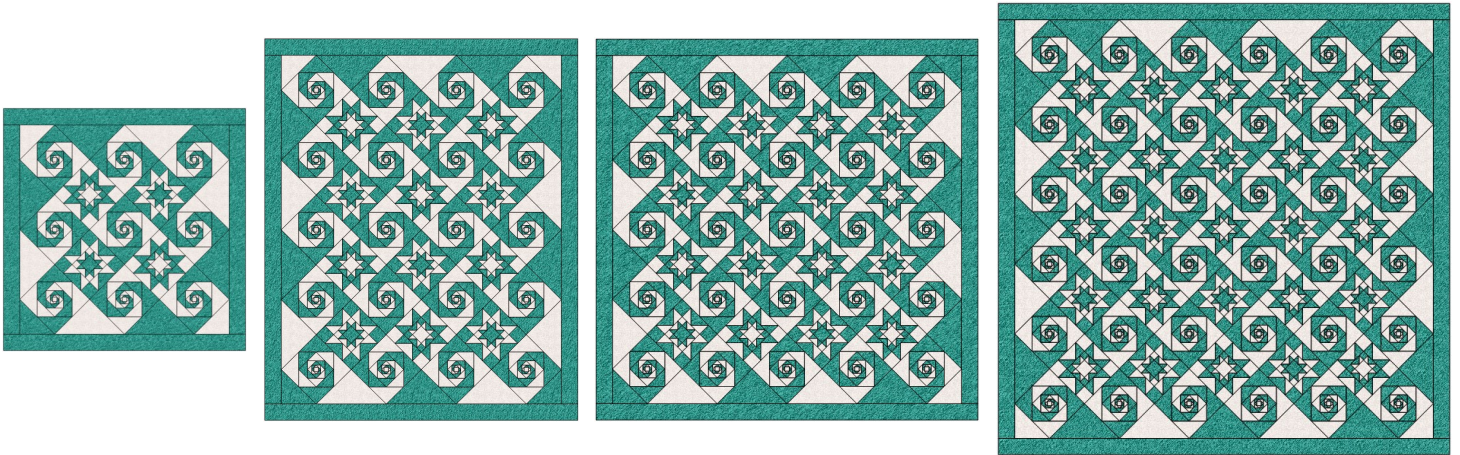


# Stars & Swirls



2 simple blocks and 2 fantastic tools make this an easy to sew quilt in 4 different sizes.

A few notes before you begin.

Cutting and sewing instructions are given for the smallest size quilt with the larger size numbers (where necessary) in brackets. You may want to highlight or underline the necessary numbers.

This project uses Deb Tucker's Studio 180 Design tools: The Wing Clipper 1 and the Large Squared Square. The two tools make this project very straight forward.



**Cutting:** Refer to the cutting charts on the next pages. Choose the size and use a highlighter pen or glow tape to mark the size you are cutting.

It looks like a lot of cutting, but don't worry. There are 4 cutting charts for the 4 quilt sizes. Choose the chart of the size of quilt you are making. Ignore the other 3 charts! Work your way systematically through the chart and cut in order to keep the confusion to a minimum! For the most part, I've started with the largest unit pieces first.

For more detailed instructions on using the Studio 180 Design tools, please refer to the instruction sheet that came with your tools.

**Sewing:** It is very important that you use an accurate seam allowance for this project.

**Pressing:** Not only is accurate sewing important, pressing for this project is important too. Start by pressing the seams flat to set the stitches in the fabric. Use a **down and up** motion rather than sliding the iron on the fabrics. Place the iron on the seam, press the steam button on the iron and count to 3. Lift the iron and move it to the next spot, press with steam and let sit.

Lap	Strip Width	# Strips	Sub-cut	Total # units
Star-Dark	7½"	1	7½"	2
	4"	1	4"	8
	3½	1	3½	10
	4½	1	4½	2
	2½	1	2½	8
	2	1	2	8
Swirl-Dark	7¼"	2	7¼"	9
	5½"	2	5½"	9
	4¼"	1	4¼"	9
	3½"	1	3½"	9
	2¾"	1	2¾"	9
	2½"	1	2½"	9
Side Setting Triangle	18½"	1	18½"	1
Corner Triangle	9½"	1	9½"	1
Border	4½"	6		
Binding	2½"	7		
Star—Light	7½"	2	7½"	2
	4"	1	4"	16
	3½	1	3½	10
	4½	1	4½	2
	2½	1	2½	8
	2	1	2	8
Swirl-Light	7¼"	2	7¼"	9
	5½"	2	5½"	9
	4¼"	1	4¼"	9
	3½"	1	3½"	9
	2¾"	1	2¾"	9
	2½"	1	2½"	9
	2	1	2	9
Side Setting Triangle	18½"	1	18½"	1
Corner Triangle	9½"	1	9½"	1

Twin	Strip Width	# Strips	Sub-cut	Total # units
Star-Dark	7½"	2	7½"	6
	4"	3	4"	24
	3½	3	3½	30
	4½	1	4½	6
	2½	2	2½	24
	2	2	2	24
Swirl-Dark	7¼"	4	7¼"	20
	5½"	3	5½"	20
	4¼"	3	4¼"	20
	3½"	2	3½"	20
	2¾"	2	2¾"	20
	2½"	2	2½"	20
Side Setting Triangle	18½"	1	18½"	2
Corner Triangle	9½"	1	9½"	1
Border	4½"	9		
Binding	2½"	9		
Star—Light	7½"	2	7½"	6
	4"	3	4"	25
	3½	3	3½	30
	4½	1	4½	6
	2½	2	2½	24
	2	2	2	24
Swirl-Light	7¼"	4	7¼"	20
	5½"	3	5½"	20
	4¼"	3	4¼"	20
	3½"	2	3½"	20
	2¾"	2	2¾"	20
	2½"	2	2½"	20
	2	2	2	20
Side Setting Triangle	18½"	1	18½"	2
Corner Triangle	9½"	1	9½"	1

Queen	Strip Width	# Strips	Sub-cut	Total # units
Star-Dark	7½"	2	7½"	8
	4"	4	4"	32
	3½"	4	3½"	40
	4½"	1	4½"	8
	2½"	2	2½"	32
	2	2	2	32
Swirl-Dark	7¼"	5	7¼"	25
	5½"	4	5½"	25
	4¼"	3	4¼"	25
	3½"	3	3½"	25
	2¾"	2	2¾"	25
	2½"	2	2½"	25
Side Setting Triangle	18½"	1	18½"	2
Corner Triangle	9½"	1	9½"	1
Border	4½"	10		
Binding	2½"	10		
Star—Light	7½"	2	7½"	8
	4"	4	4"	32
	3½"	4	3½"	40
	4½"	1	4½"	8
	2½"	2	2½"	32
	2	2	2	32
Swirl-Light	7¼"	5	7¼"	25
	5½"	4	5½"	25
	4¼"	3	4¼"	25
	3½"	3	3½"	25
	2¾"	2	2¾"	25
	2½"	2	2½"	25
	2	2	2	25
Side Setting Triangle	18½"	1	18½"	2
Corner Triangle	9½"	1	9½"	1

King	Strip Width	# Strips	Sub-cut	Total # units
Star-Dark	7½"	3	7½"	12
	4"	5	4"	48
	3½"	6	3½"	61
	4½"	2	4½"	12
	2½"	3	2½"	48
	2	3	2	48
Swirl-Dark	7¼"	8	7¼"	36
	5½"	6	5½"	36
	4¼"	4	4¼"	36
	3½"	4	3½"	36
	2¾"	3	2¾"	36
	2½"	3	2½"	36
Side Setting Triangle	18½"	2	18½"	3
Corner Triangle	None required			
Border	4½"	11		
Binding	2½"	11		
Star—Light	7½"	3	7½"	13
	4"	5	4"	52
	3½"	6	3½"	65
	4½"	2	4½"	12
	2½"	3	2½"	52
	2	3	2	52
Swirl-Light	7¼"	8	7¼"	36
	5½"	6	5½"	36
	4¼"	4	4¼"	36
	3½"	4	3½"	36
	2¾"	3	2¾"	36
	2½"	3	2½"	36
	2	3	2	36
Side Setting Triangle	18½"	1	18½"	2
Corner Triangle	9½"	1	9½"	2

**Star Block**—you will be making both dark stars and light stars. Consider the star in the centre of the block as the indicator of light or dark.

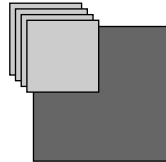


The blocks with a dark centre star will be considered a dark block. The blocks with a light centre will be considered a light block.

There are large flying geese units and smaller flying geese units in each block.

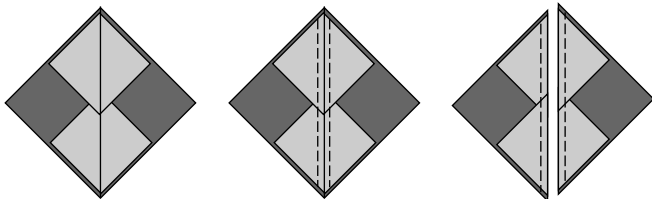
Use the Studio 180 Designs Wing Clipper 1 to piece and trim both of these size of flying geese units.

**Large Geese:** you will need the  $7\frac{1}{2}$  " x  $7\frac{1}{2}$ " square and 4 of the  $4$ " x  $4$ " square units for each block. Each set of units makes 1 block.

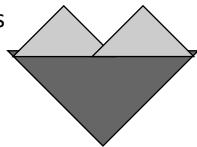


In this example, the small light squares make the star points for the dark geese unit.

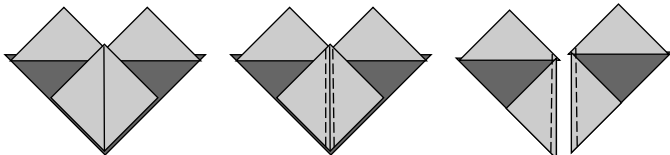
Position 2 smaller squares over the larger square with rights sides facing. Nudge the smaller squares away from the outside edges. Draw a diagonal line down the centre of the smaller squares. Stitch  $\frac{1}{4}$ " away from the diagonal line on both sides. Press, and cut apart on the drawn line.



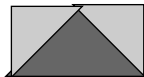
Fold and press the seam allowances towards the small triangles.



Place another small square over the corner of the large square/triangle. Draw a diagonal line and stitch  $\frac{1}{4}$ " away on both sides of the line. Press and cut apart on the drawn line.

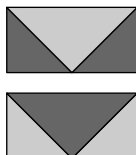


Fold and press the seam allowances towards the small triangle.



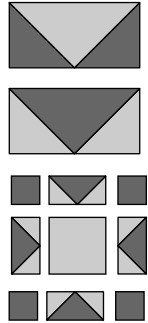
Use the Wing Clipper 1 to trim these units down to measure  $3\frac{1}{2}$ " x  $6\frac{1}{2}$ ". This includes seam allowances.

- Make a total of 8 (24, 32, 48) light coloured flying geese units
- Make a total of 8 (24, 32, 52) dark coloured flying geese units.



**Small Geese:** repeat the steps above using a  $4\frac{1}{2}$ " square and 4 of the  $2\frac{1}{2}$ " squares. Use the Wing Clipper 1 to trim these units down to measure  $2$ " x  $3\frac{1}{2}$ ". This includes the seam allowances.

- Make a total of 8 (24, 32, 52) light coloured flying geese units
- Make a total of 8 (24, 32, 48) dark coloured flying geese units.



Arrange the smaller flying geese units with a  $3\frac{1}{2}$ " x  $3\frac{1}{2}$ " square and 4 of the  $2$ " x  $2$ " squares as in the diagram below.

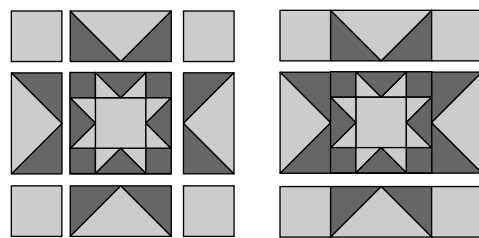
Sew the units together as in a 9-patch block. Press the seam allowances towards the middle of the block.



This small star block now becomes the centre of the larger star block.

Note that the fabric colour now changes position. A light small star will have a darker fabric surrounding it and a dark small star will have a light fabric surrounding it.

Arrange the small star with the large geese units and 4 of the  $3\frac{1}{2}$ " x  $3\frac{1}{2}$ " squares. Sew the units together as in a large 9-patch block.



- Make 2 (6, 8, 12) dark centred stars
- Make 2 (6, 8, 13) light centred stars

